

Leopard PPPoE Configuration

This howto will guide you through setting up a basic PPPoE DSL account in MacOS X Leopard (10.5)

Directions:



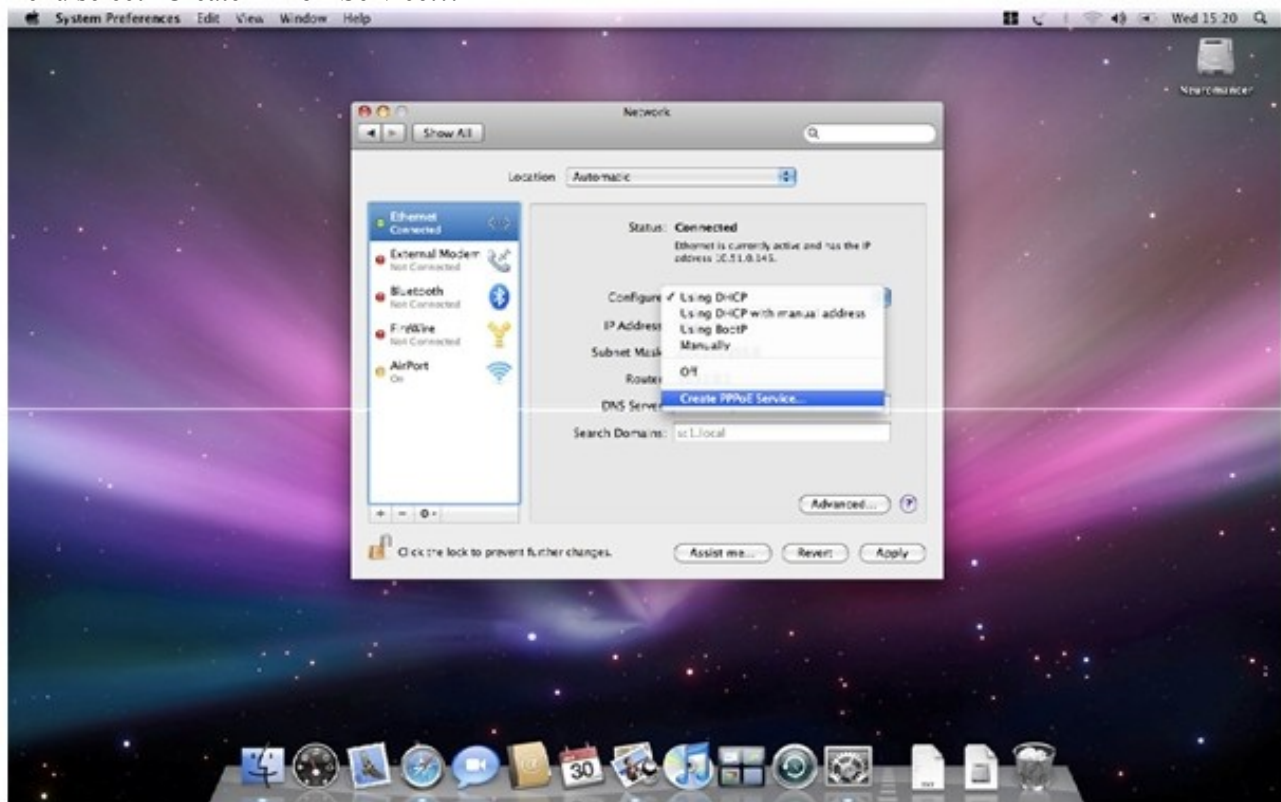
From the desktop go to the Apple menu and select "System Preferences."



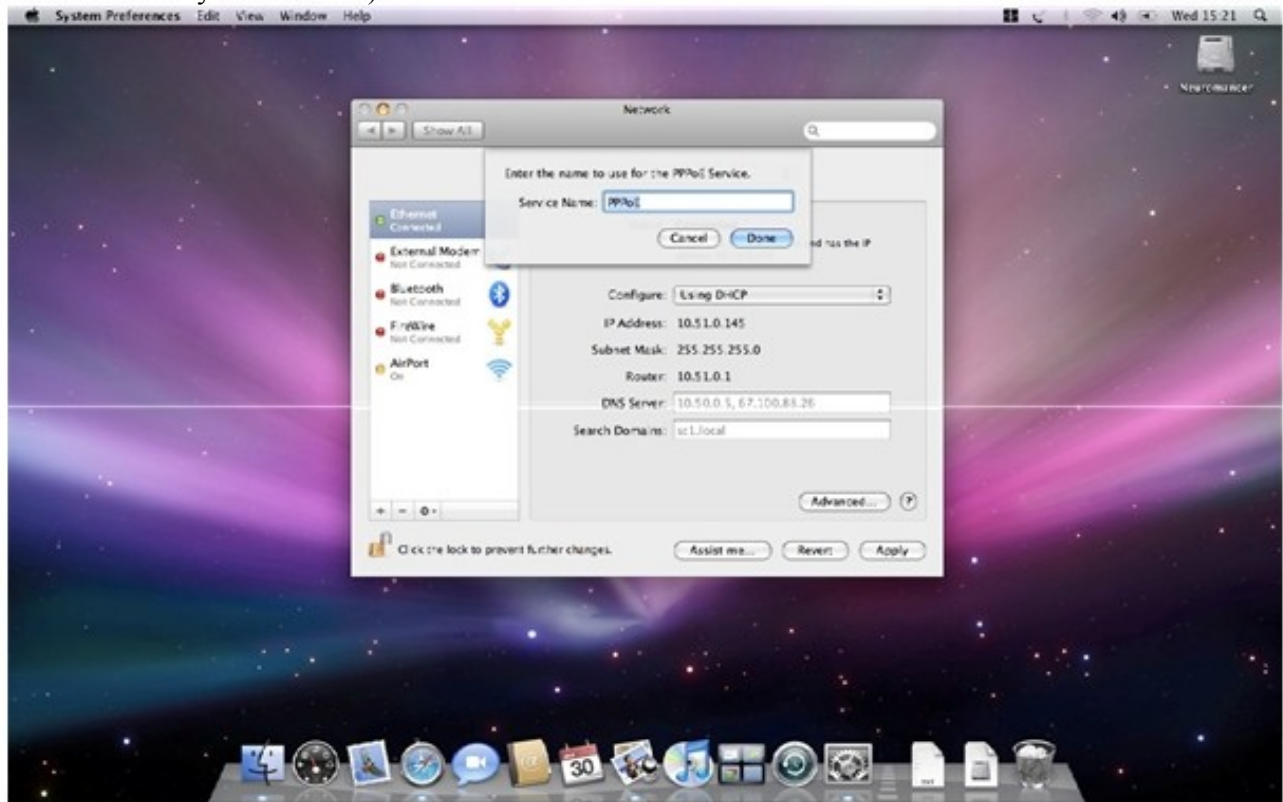
In the System Preferences window click the network icon.



In the Network Preference pane click on external modem so that it's highlighted, then from the configure menu select "Create PPPoE Service..."



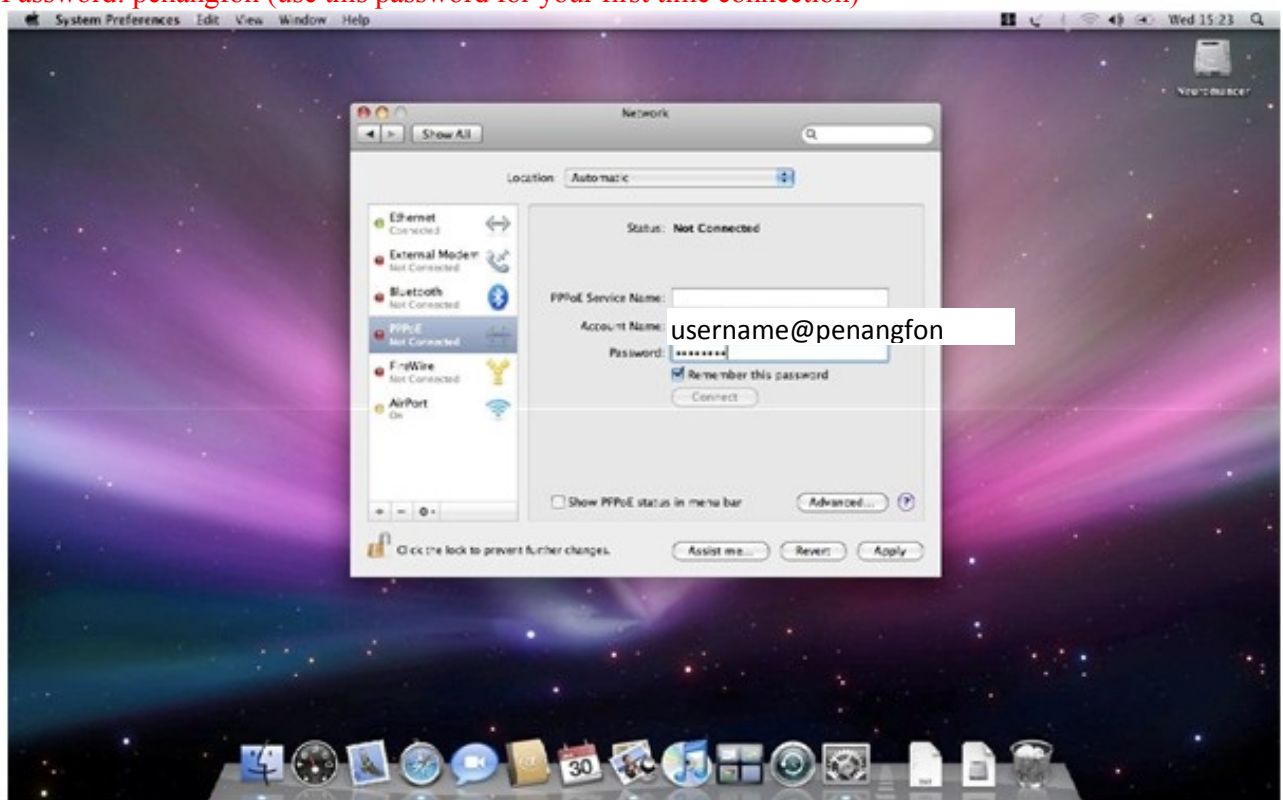
When prompted name the PPPoE service (this field is free form, i named mine PPPoE you may wish to use the name of your ISP here.)



Now enter the PPPoE info from your ISP here. Must leave the PPPoE Service name blank.

Account Name: username@penangfon

Password: penangfon (use this password for your first time connection)



Click the “Advanced” button to bring up the advanced settings window and make changes as appropriate, “Connect automatically when needed” is probably the only important one.



Click OK, then Apply, and close out of System Preferences and you're done.