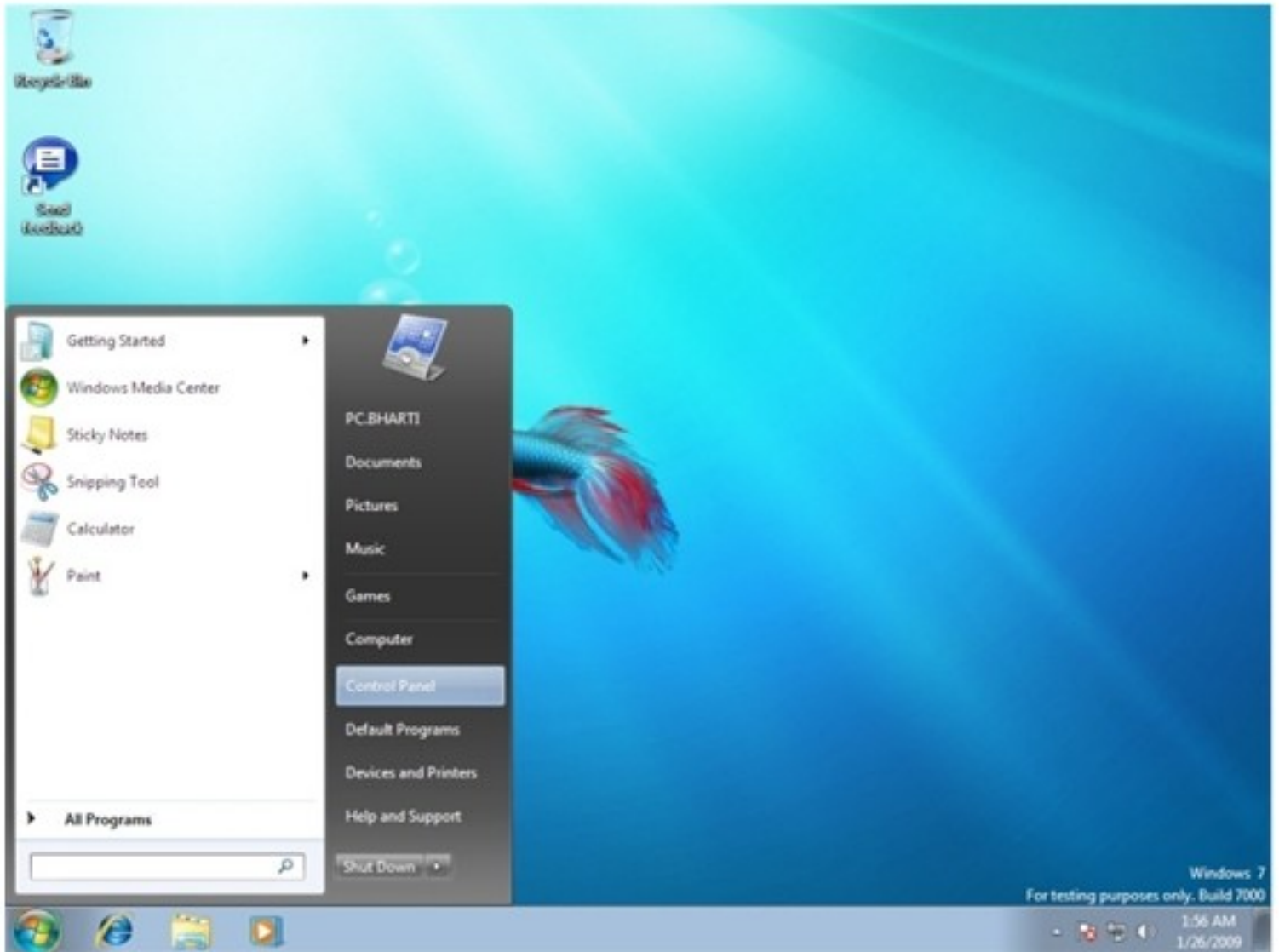
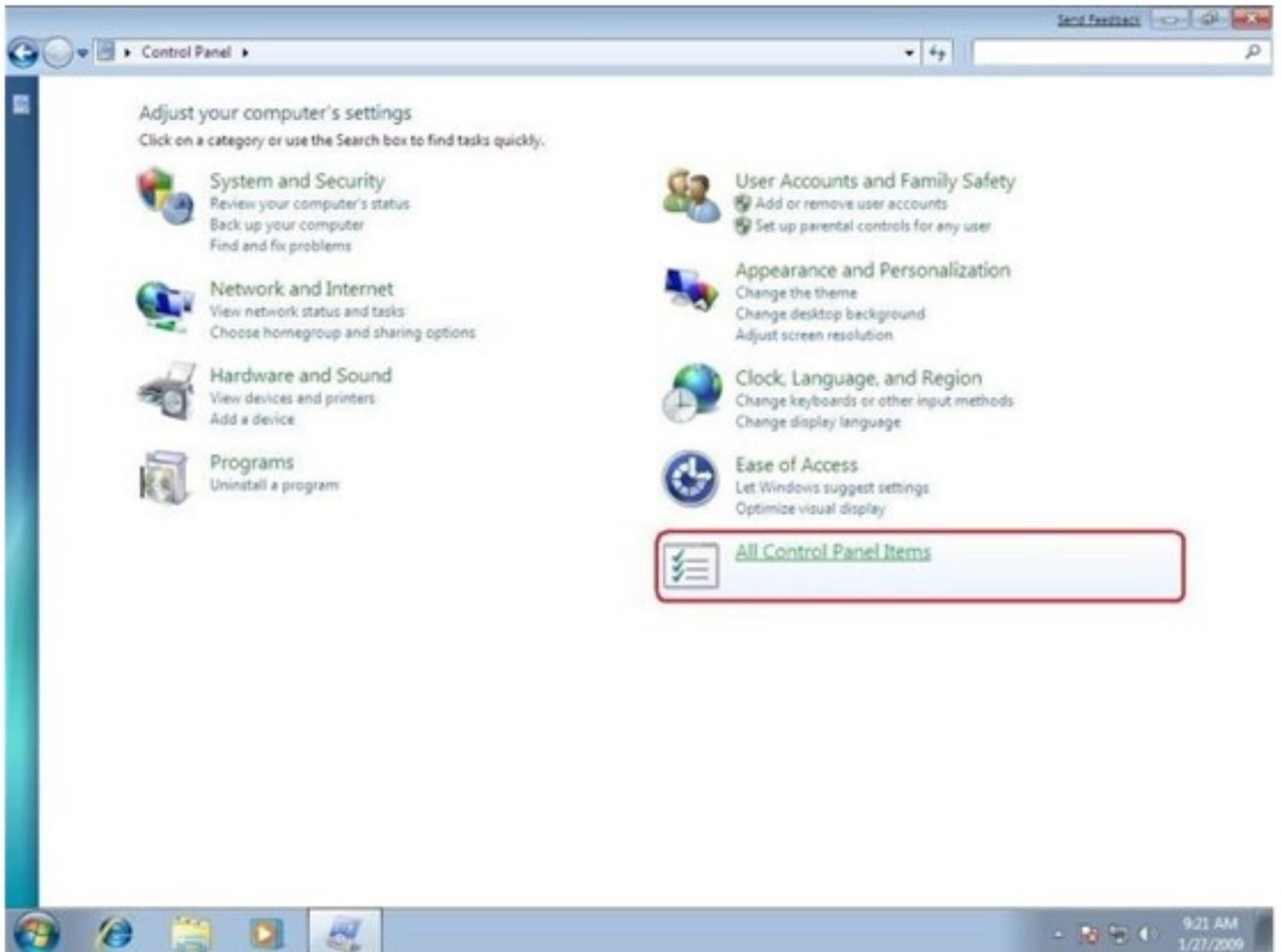


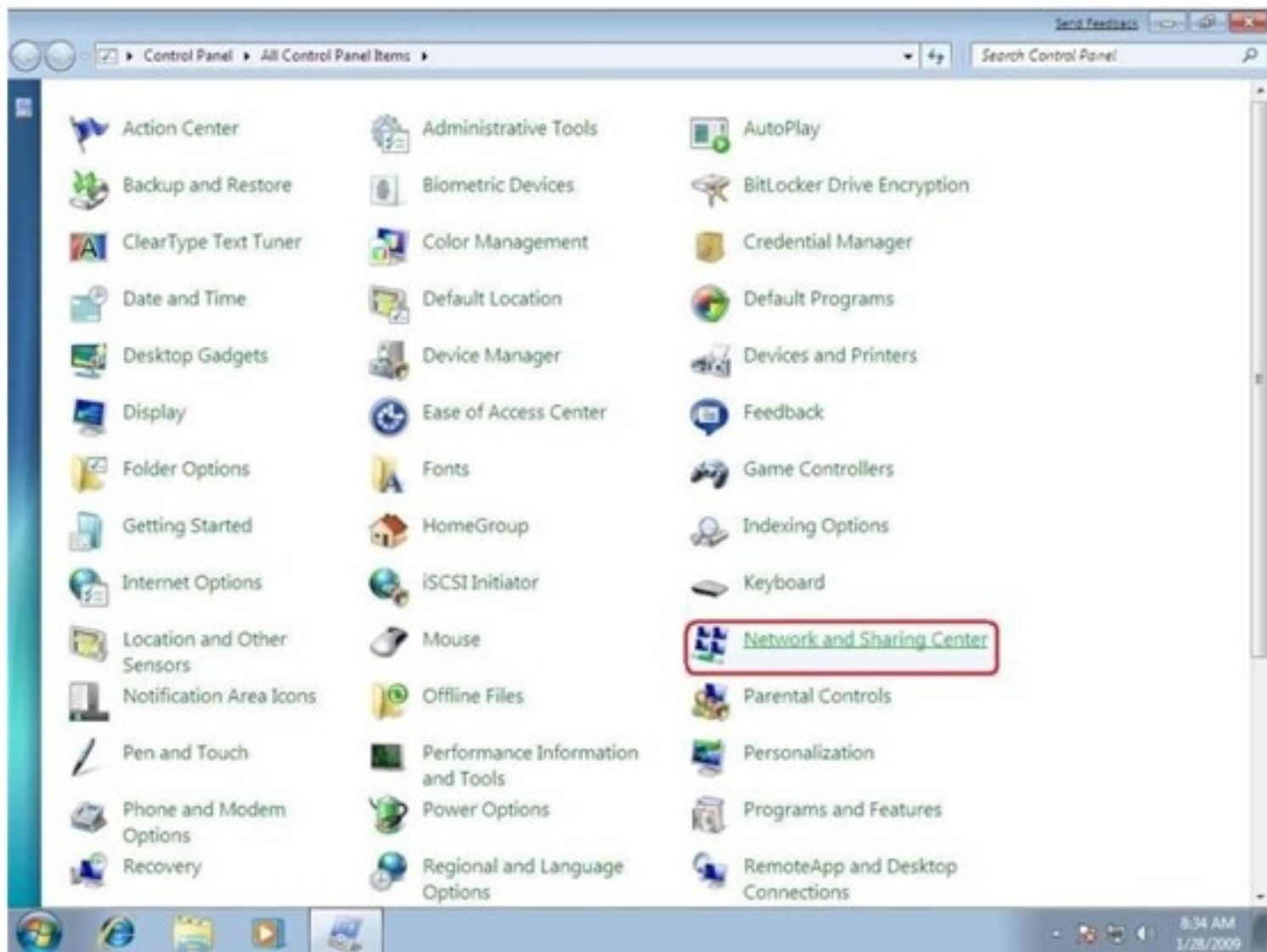
# Microsoft Windows 7 PPPoE Connection Setup



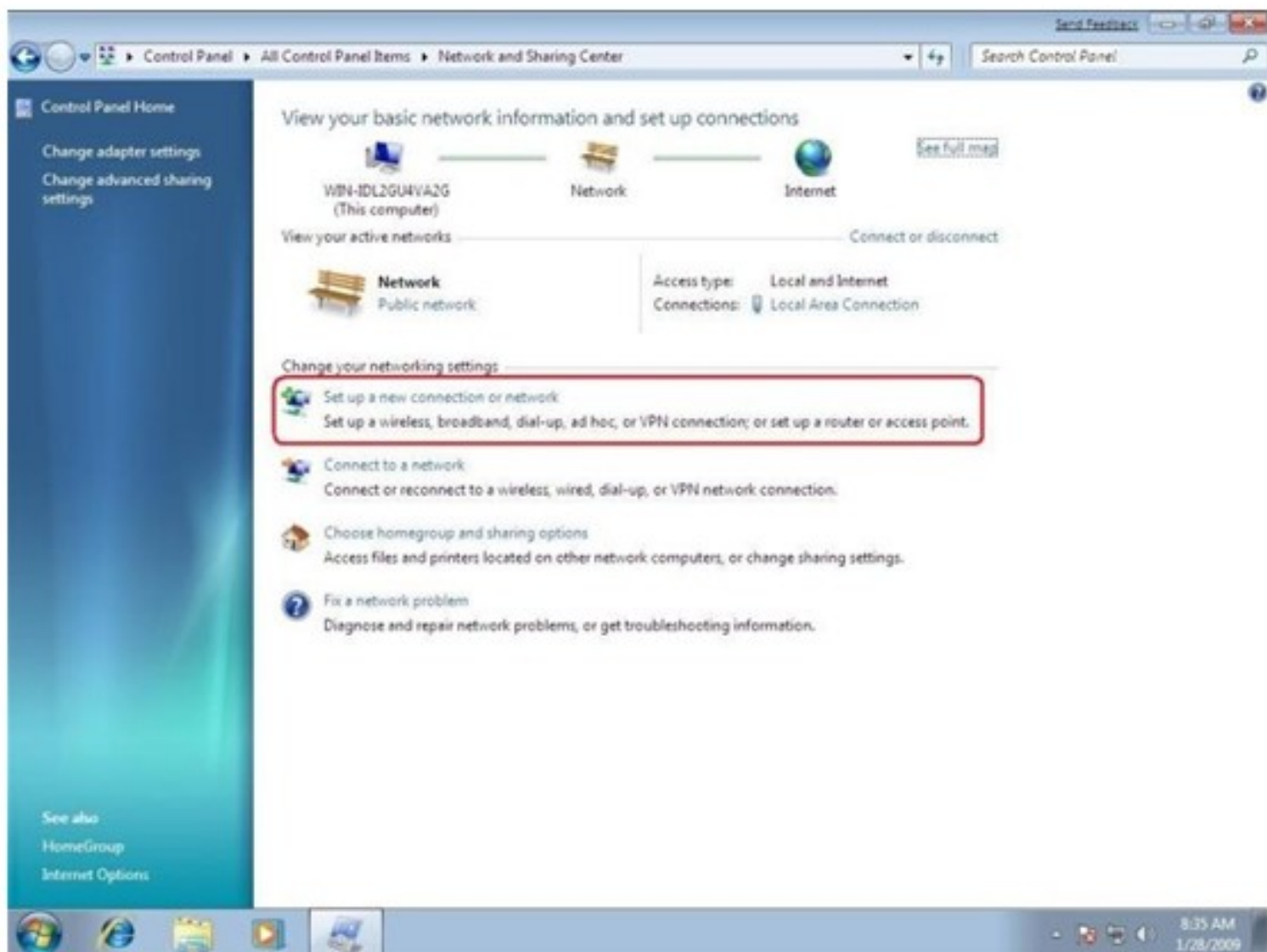
Go to Start ☞ Control Panel



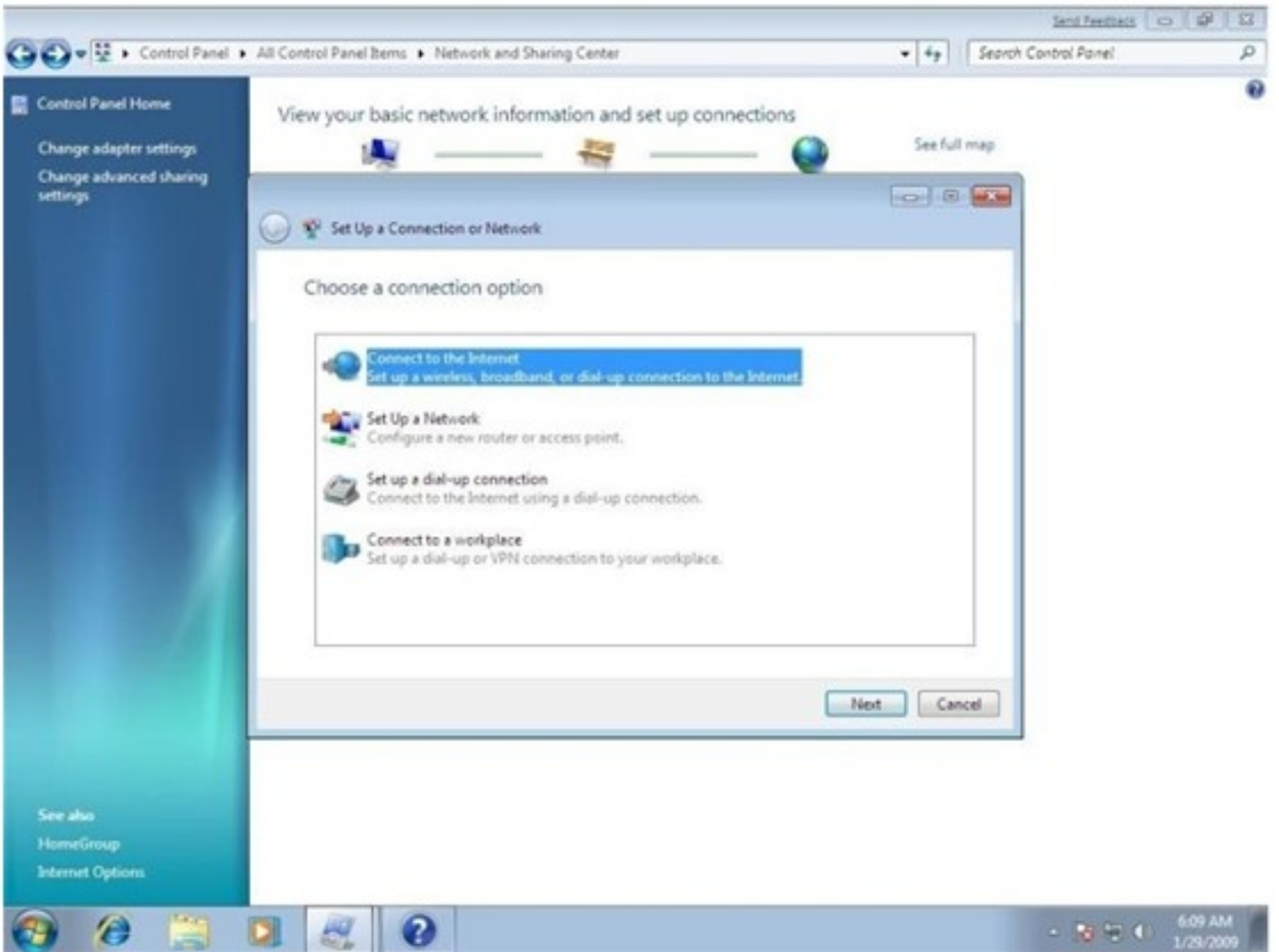
Click "All Control Panel Items" to expend all the available options.



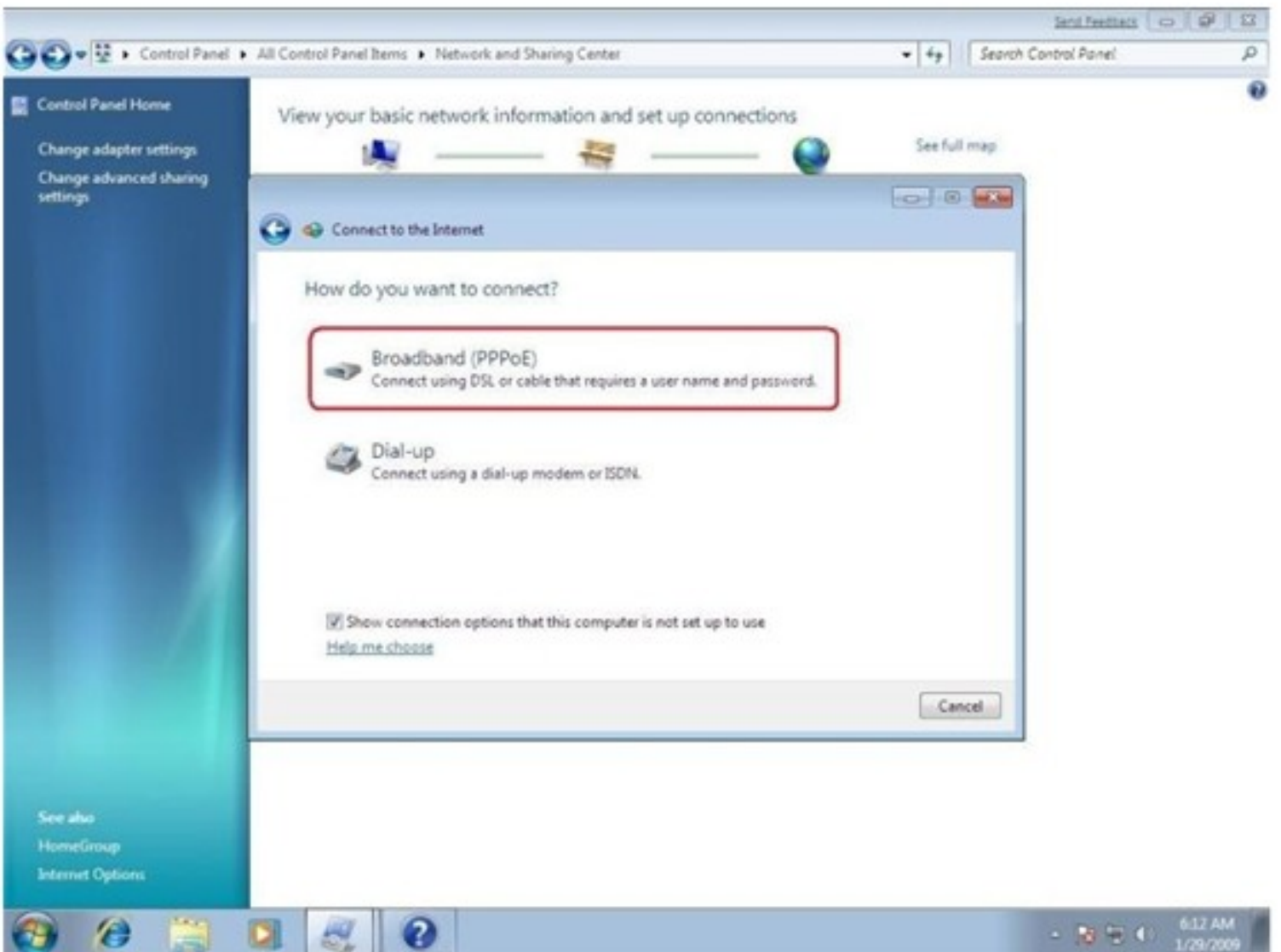
Click "Network and Sharing Center"



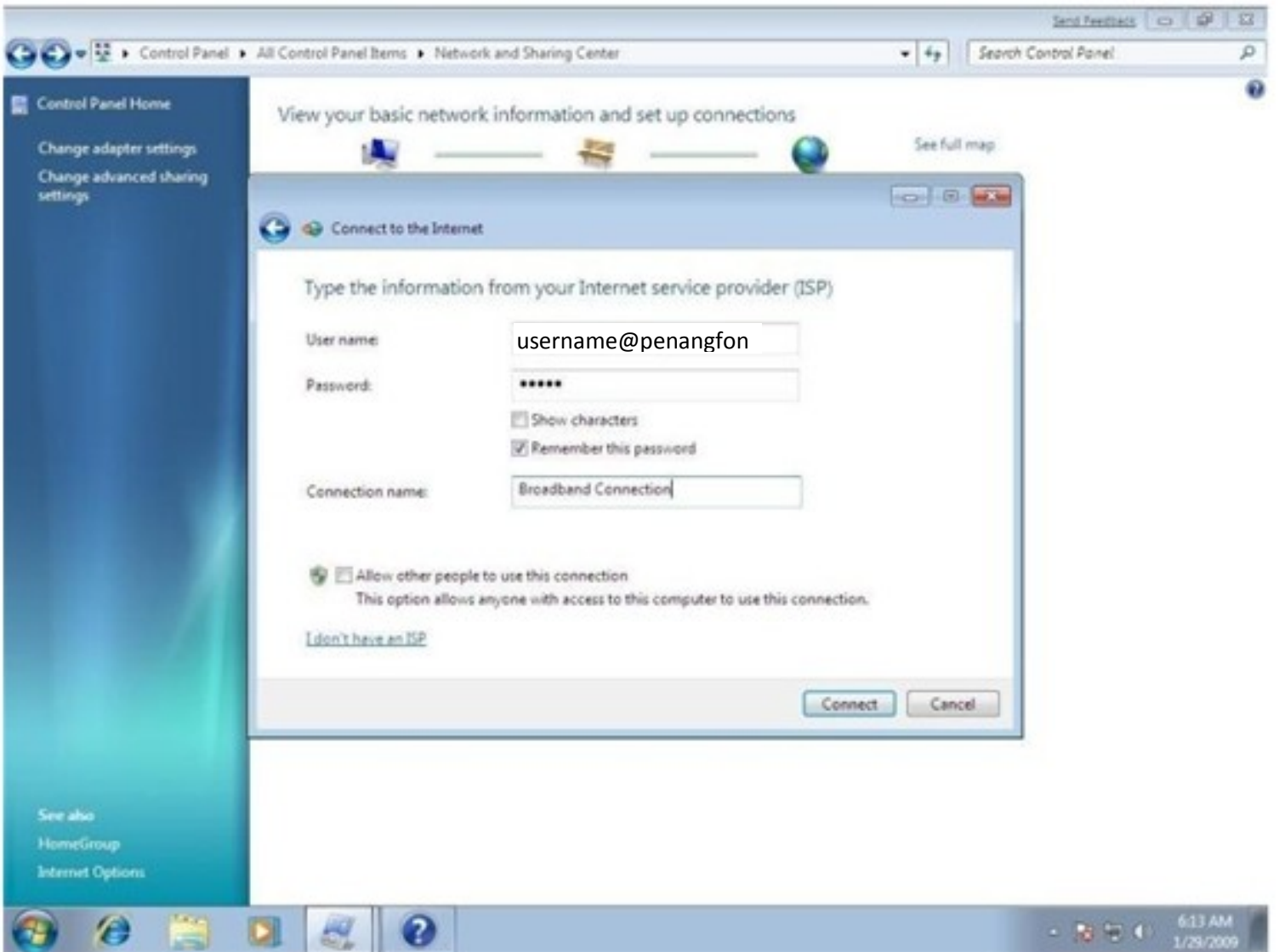
Select "Set up a new connection or network"



Select "Connect to the Internet" follow by "Next".

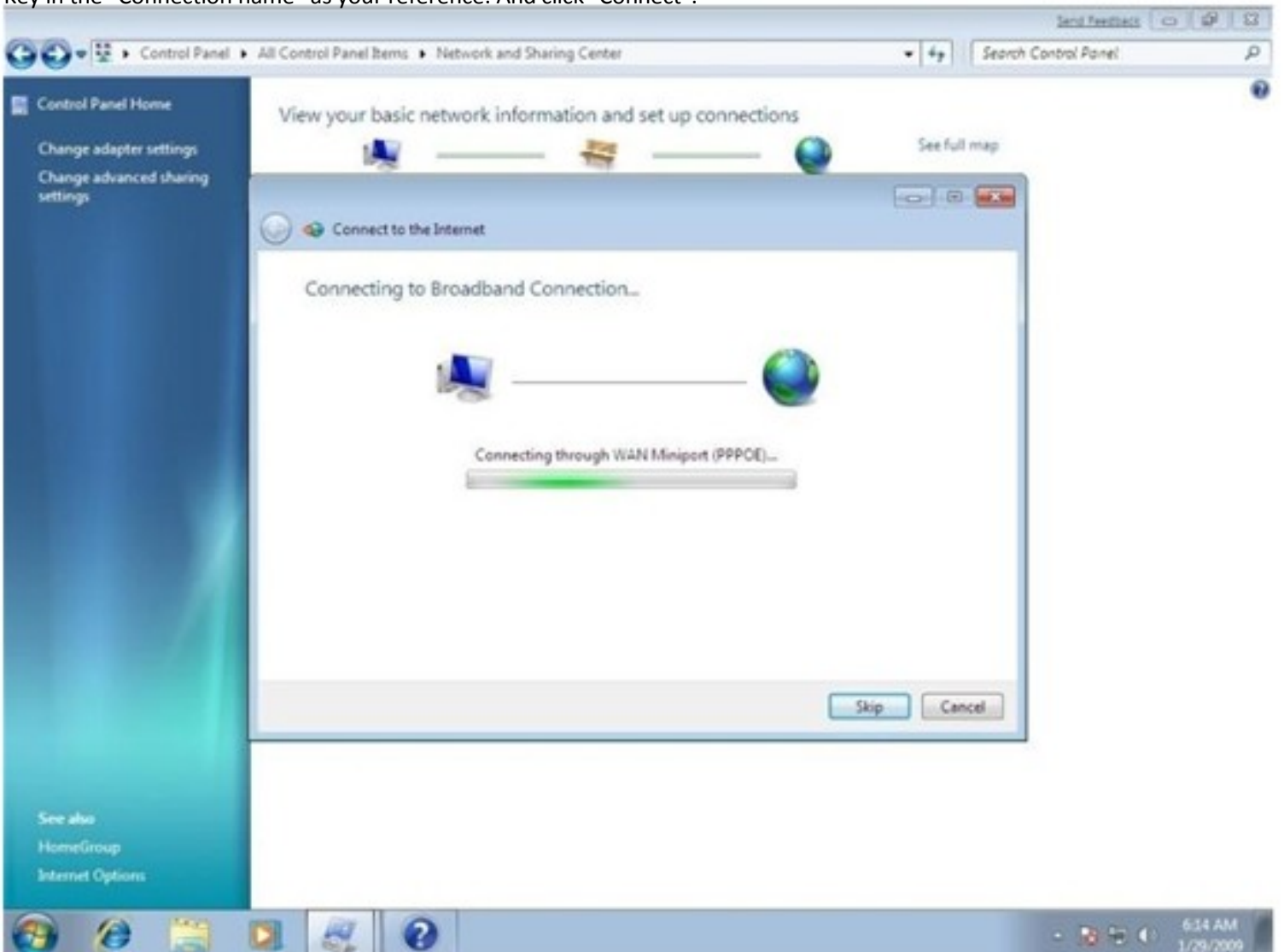


Choose "Broadband (PPPoE)"

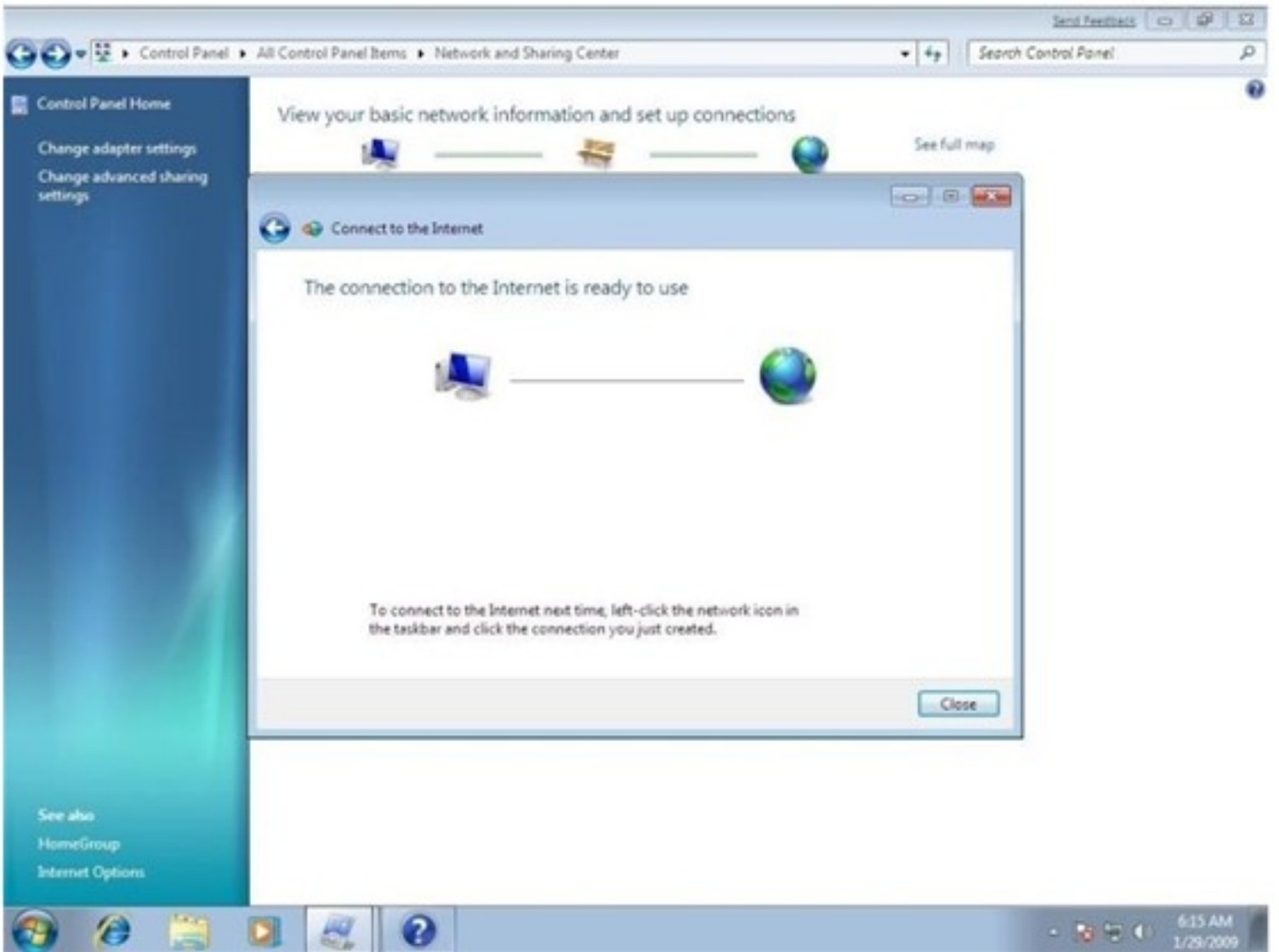


Insert the username and password provided, tick "Remember this password" (i.e username@penangfon / password is "penangfon"),

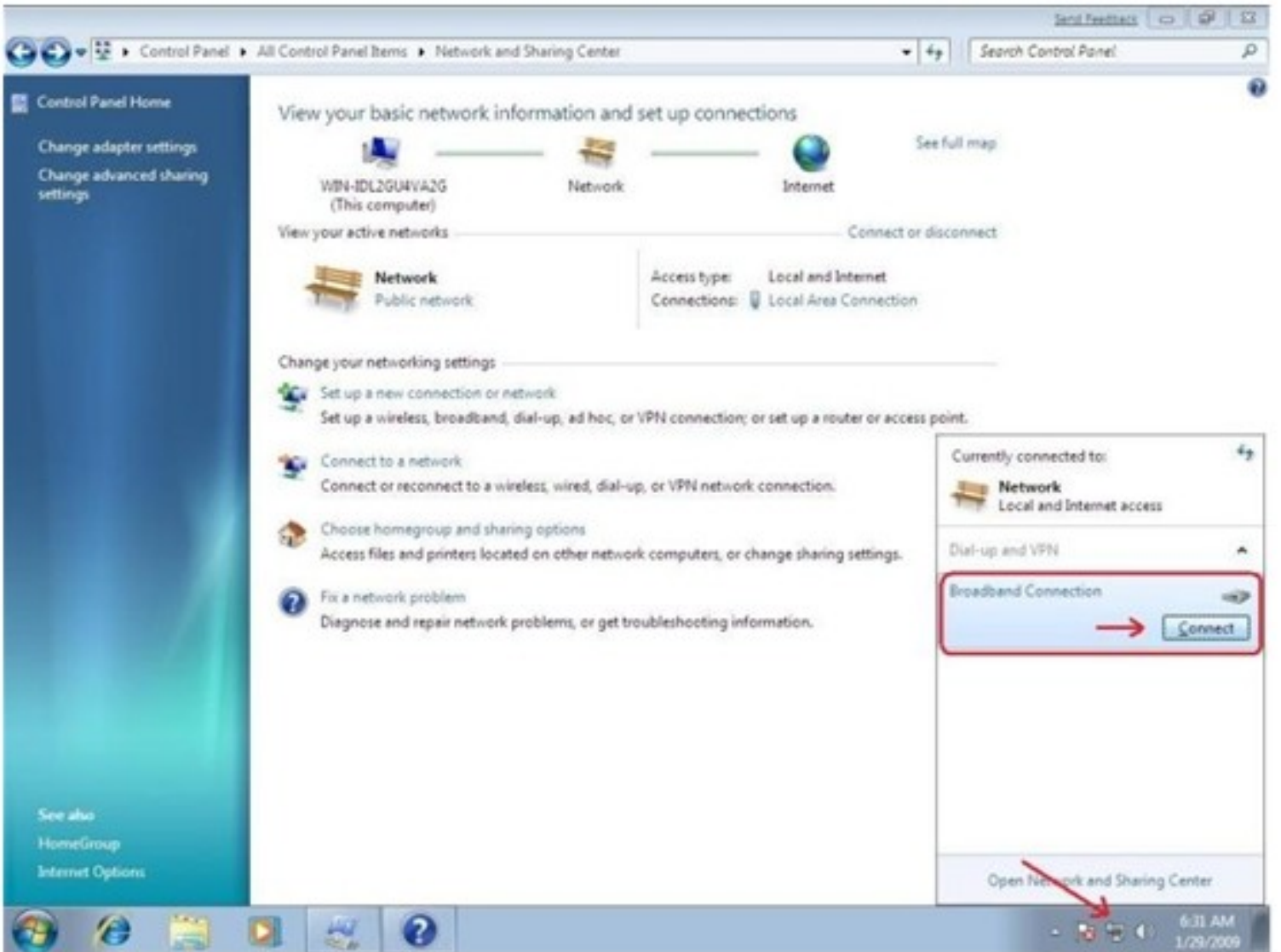
Key in the "Connection name" as your reference. And click "Connect".



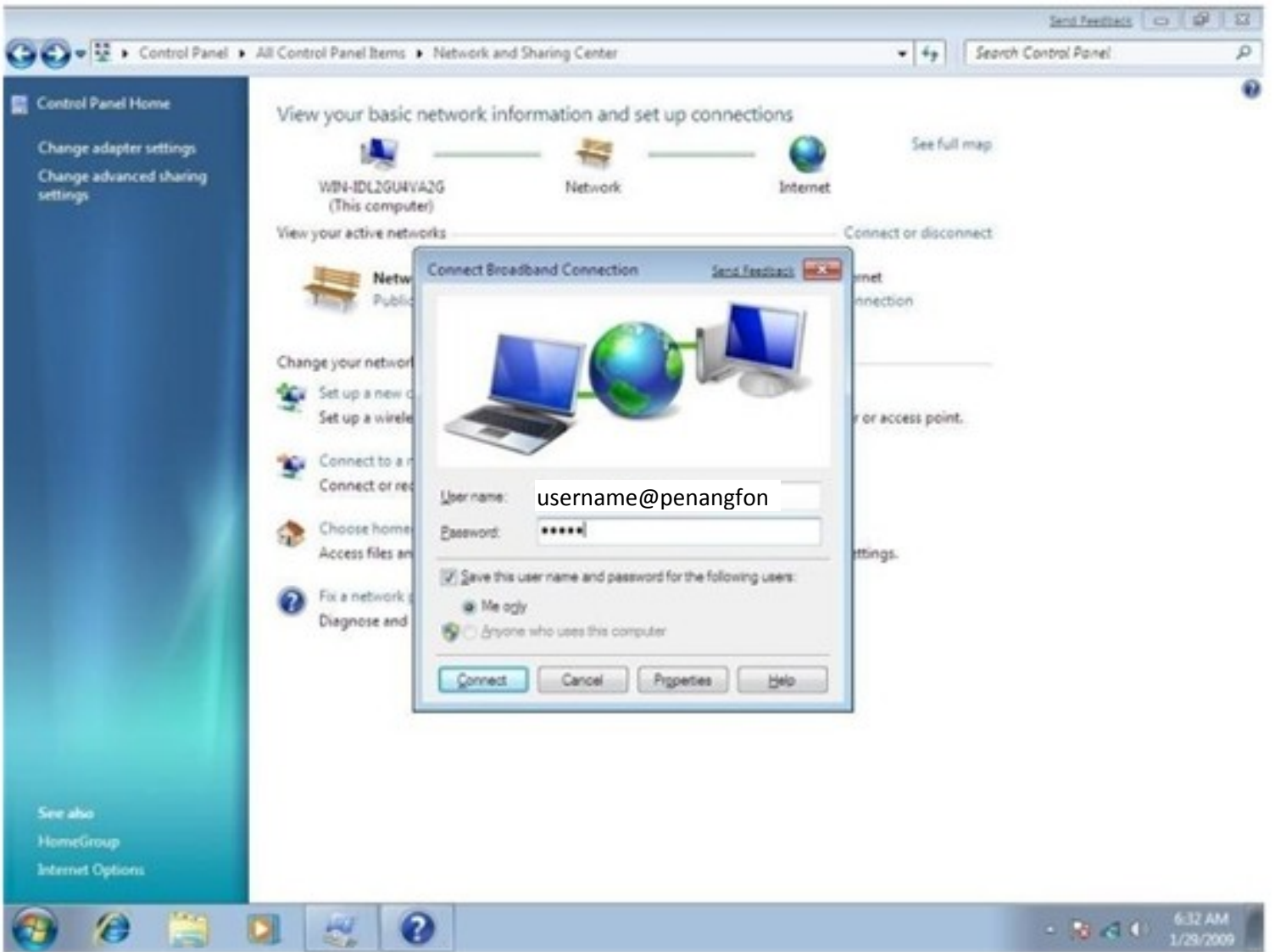
Connection will be established.



If login succeed, "The connection to the Internet is ready to use" screen will appear. You can close this.



If you want to re-establish the connection after disconnected, click the network logo on the bottom right, Click connect on the Connection name you created earlier.



A connection dialler will prompt out, Click "Connect".